



Places to Visit in and around Looe



Produced by Looe Tourist Information, Looe Library and Community Hub, Millpool, Looe PL13 2AF Tel: 01503 261335. For more ideas of places to visit and things to do visit our website at www.visitlooe.co.uk/whats-on. Correct at time of printing.

Adrenaline Quarry

Lower Clicker Road, Menheniot, Near Liskeard, PL14 3PJ

Website: www.adrenalinquarry.co.uk

Tel: 01579 380204



Unique gravity park, water park & race track with spectacular views, picnic spots and wild swimming.

Free entry, parking and playpark.

WIPE OUT AT AQUAPARK 6 YRS+

Climb, jump, slide & bounce in our huge inflatable playground.

GO KARTING AT KARTWORLD 7 YRS+

Arrive & drive adult, youth & junior karts on the 800m all weather track.

FLY DOWN THE ZIP

Get thrown off a cliff on the UK's maddest zip wire.

RIDE THE GIANT SWING

Go from sky high to freefall on our clifftop swing 150ft above the lake.

TRY AXE THROWING 12 YRS+

Like darts, but with axes. Unleash your inner savage and get busy hurling.

Dog friendly

Bodmin Jail

Berrycoombe Road, Bodmin,

PL31 2NR Sat Nav please use PL31 2PL

website: www.bodminjail.org

Tel: 01208 76292



Discover Cornwall's most haunting and dark history at Bodmin Jail's brand new world-class immersive experience.

Delve into the depths of the state-of-the-art 'Dark Walk', where your perceptions between the past and present will be blurred and provoked.

An award-winning heritage tour or brave the prison on a paranormal experience. There is something for everyone at this leading visitor attraction.

Bodmin and Wenford Railway

Bodmin General Station, Bodmin, PL31 1AQ

Website: bodminrailway.co.uk

Tel: 01208 73555



Discover the nostalgia of steam travel, with a journey back in time on Cornwall's leading full-size railway operated by steam locomotives.

Relax in style and enjoy a leisurely 13-mile round trip, taking in the sights, sounds and smells of a bygone age, as the era of a Cornish branch line in the 1950s reveals itself during the course of your journey.

Trains operate from Bodmin General, the principal station where free parking is available.

Passenger train services operate throughout the year, regularly from late March to early October. Just a 10-minute walk from the town centre, we are proud to be one of Cornwall's dog-friendly attractions!

Cardinham Woods

Cardinham, Bodmin PL30 4AL

Website: forestryengland.uk/cardinham

Tel: 01208 76787



From adventure and exercise to peaceful strolls and stunning scenery, share moments of relaxation and exertion alike at Cardinham Woods.

The perfect location to recharge and relax, Cardinham Woods is in central Cornwall and has everything you could want from an outdoor woodland adventure. The diverse woodland is full of secret glades, allowing you to take a step back from the hustle and bustle of life into a haven of natural beauty. Stream-side paths, fresh air and stunning viewpoints make Cardinham Woods a wonderful spot for all. If you're a thrill seeker searching for your next adrenaline rush, our mountain bike trails are not to be missed.

Cafe open daily. Dog friendly. Bookable mobility hire available.

Copperfish Distillery

The Old Marine Store, 25M West Of Fore Street, PL13 1DX

Website: www.copperfishdistillery.co.uk

Tel: 07798 755002



A small craft distillery and retail outlet established in 2018.

The distillery makes high quality great tasting authentic Gins, Moonshines, Rums and Whiskeys. with passion and pride in small batches, showcasing the best of Cornwall.

Made in Cornwall sourcing local ingredients (where possible), to support our local economy, reduce “drink miles” and creating an authentic locally produced product.

Copperfish branded drinks made from scratch.

Cornish Orchards

Westnorth Manor Farm, Duloe, Liskeard

PL14 4PW

Website: www.cornishorchards.co.uk

Tel: 01503 269007



Nestled in the Looe Valley, Cornish Orchards has been producing cider on our Duchy Farm for over 20 years, harnessing the cool Cornish winter to produce award winning ciders.

Fortunate to make cider in such a beautiful location and striving to work with the environment to make as little impact as possible, following initiatives such as 'Zero to Landfill' and 'Zero Carbon by 2030'.

The cider shop offers a full range of ciders and soft drinks, with a knowledgeable team who offer 'cider of the day' to taste and can talk you through the full range.

Tours and Tastings, give an opportunity to share their story and welcome people onto the farm to see how they produce cider, taking you from their Cornish Orchard to finished product.

Fowey Valley Cider

Unit 11 Restormel Ind Estate, Liddicoat Road, Lostwithiel

PL22 0HG

Website: www.foweyvalleycider.co.uk

Tel: 07707 049907



At Fowey Valley Cidery local traditions are kept alive; all of the cider and spirits are made using West Country apples, delivering a perfect Cornish cider for a refreshing taste.

Masterfully crafting the best Cornish cider for 25 years, they aim to remain as Cornwall's favourite cidery.

A craft distillery is run alongside the cidery in Lostwithiel, expertly bringing life back into traditional Cornish spirits. The range includes Gin, Vodka, Brandy, and Eau de Vie, all made to the finest quality.

No industrial alcohol is used and everything is made by hand - from scratch, ensuring that they bring the same passion to every last bottle lovingly create.

Looe Harbour Heritage Centre

The Quay, West Looe PL13 2BX

Website: www.looeharbourheritagecentre.uk

Tel: 01503 264223



A visit to the Heritage Centre offers a unique experience immersing you in the stories of maritime Looe; the story of the harbour, river and bridges.

Plus, all about Sardines!

Dog friendly

Looe Valley Vineyard

Lower Locrenton, Liskeard PL14 4RN Website:

www.looevalleyvineyard.co.uk

Tel: 07792 538442



Looe Valley Vineyard is about 4 miles from Looe, near St Keyne village (close to Causeland Station). From Easter to October, it is open for Tours and Tastings which are 5* rated on Trip Advisor and Google reviews.

Over 2.5 hours you will learn about how vines grow, how wine is made and the professional way to taste wine. Wine tasting on a covered terrace overlooking the vines.

National Trust

Antony House

Cotelele House

Lanhydrock House

Trerice Manor

Dog friendly in woods and parkland, dogs must be kept on leads/under control



Old Guildhall Museum and Gaol

Higher Market Street, East Looe PL13 1AA

Website: www.looemuseum.co.uk

Tel: 01503 263709



The Old Guildhall Museum and Gaol is contained in a 15th century listed building with a fascinating display of the history of Looe.

The building itself is a marvellous exhibit on its own, as it retains many of its medieval features, with ancient cells and the original raised magistrates bench, complete with the Royal Coat of Arms, from when the local court was held there.

The museum is spread over two floors, enter via the upper floor of the building, which from 1587 to 1878, was the East Looe Town Hall and Magistrates Court. Beneath the magnificent timber-framed roof, laws were made and enforced, and the town was administered by the Mayor and Corporation, known as Burgesses.

Downstairs, find the two cells used to hold the criminals of Looe in the past. This really was a case of 'send them down' from the court above!

Dog friendly

Polperro Heritage Museum of Smuggling and Fishing

The Warren, Polperro PL13 2RB

Website: www.polperroharbourtrust.org/harbour-museum

Tel: 01503 273005



A small museum located right on the harbourside of the beautiful fishing village of Polperro.

The museum contains a fascinating insight into the history of fishing and smuggling from the late 18th century to date. It houses a remarkable collection of photos dating from around 1860. The collection is complemented by a wonderful collection of model ships. The museum is housed in what was the Old Pilchard Factory until the early 20th century.

Family history records are available for viewing.

Dog friendly

Polperro Model Village

Mill Hill, Polperro PL1 32RP

Website: www.polperromodelvillage.co.uk

Tel: 01503 272378



No visit to Cornwall would be complete without a visit to the famous Polperro Model Village entertaining visitors since the late 1940's

Pass through the gates into the Model Village, and enter a true village in miniature. Feel like a giant, as the village spreads out at your feet and you will see many of the features which have made Polperro so famous.

See the reproduction of the actual village of Polperro reduced to scale, which enables you to appreciate an aerial view of this beautiful, quaint, ancient fishing village.

Walk the narrow winding streets with ancient buildings, following in the footsteps of smugglers who moved under the cloak of darkness.

Well-behaved dogs are welcome too!

Porfell Wildlife Park & Sanctuary

Trecangate, Porfell, Liskeard PL14 4RE

Webste: www.porfell.co.uk

Tel: 01503 220211



Visit Cornwall's biggest exotic animal sanctuary!

Porfell Wildlife Park is a great family attraction. It offers sanctuary to many different animals from around the world. They might be neglected, injured, imported illegally or simply no longer wanted. For whatever reason they come to the sanctuary - they're always welcome.

Since 1989, Porfell has created homes and habitats designed to suit each species' individual needs. The result is a living attraction quite unlike a zoo. Here visitors can get up close to wildlife, feed the animals, touch them and learn all about the natural world.

Sorry NO DOGS allowed in the park.

Wheal Martyn Mine and Museum

Wheal Martyn, St Austell, PL26 8XG

Website: www.wheal-martyn.com

Tel: 01726 850362



China clay mining has shaped the landscape, lives of people and economy of mid-Cornwall for over 250 years.

A visit might include: wandering around the interactive Discovery Centre, exploring historic trails, woodland walks in grounds teeming with wildlife, and enjoy spectacular views of a modern working clay pit.

Immerse yourself in the atmospheric grounds of the original Victorian clay works, bursting at the seams with tools, machinery, artefacts and stories. Discover Wheal Martyn's past life at the heart of this global industry.

Hear real life tales of the industry which shaped the landscape and iconic 'Cornish Alps', and of the people in mid-Cornwall and beyond, whose lives were shaped by this 'white gold'. Find out about Cornwall's largest mining industry, past and present, and catch a glimpse of modern machines in the working clay pit.

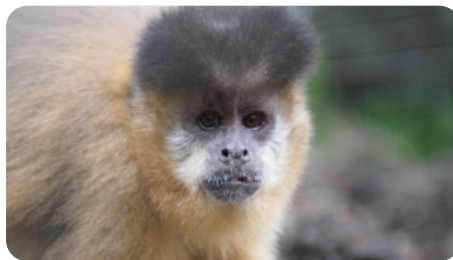
Dog friendly

Wild Futures Monkey Sanctuary

Murrayton House, St Martins, Looe, PL13 1NZ

Website: www.monkeysanctuary.org

Tel: 01503 262532



The Monkey Sanctuary is home to a large number of monkeys, each one with their distinct characters and personalities. The sanctuary is an active rescue centre dealing with individuals that have often not had a very happy start to life, the needs of the monkeys always take priority.

The Monkey Sanctuary has lots for children to do, including a wildlife room that allows everyone visiting to find out more about the flora and fauna of the area. There is also a large south facing garden for you to explore while supporting this very worthwhile cause.



Visit **Looe Tourist Information Centre** for more ideas to enjoy your holiday.

TOURIST INFORMATION CENTRE

Monday 9:30am - 1pm
Tuesday 9:30am - 5pm
Wednesday Closed
Thursday 9:30am - 5pm
Friday 9:30am - 1pm
Saturday 10:00am - 2pm



TOURIST INFORMATION TRAILER

(SEASONAL)

Monday 9am - 5pm
Tuesday 9am - 5pm
Wednesday 9am - 5pm
Thursday 9am - 5pm
Friday 9am - 5pm
Saturday 10am - 2pm

Looe Library and Community Hub, Millpool, West Looe PL13 2AF
Tel: 01503 261335